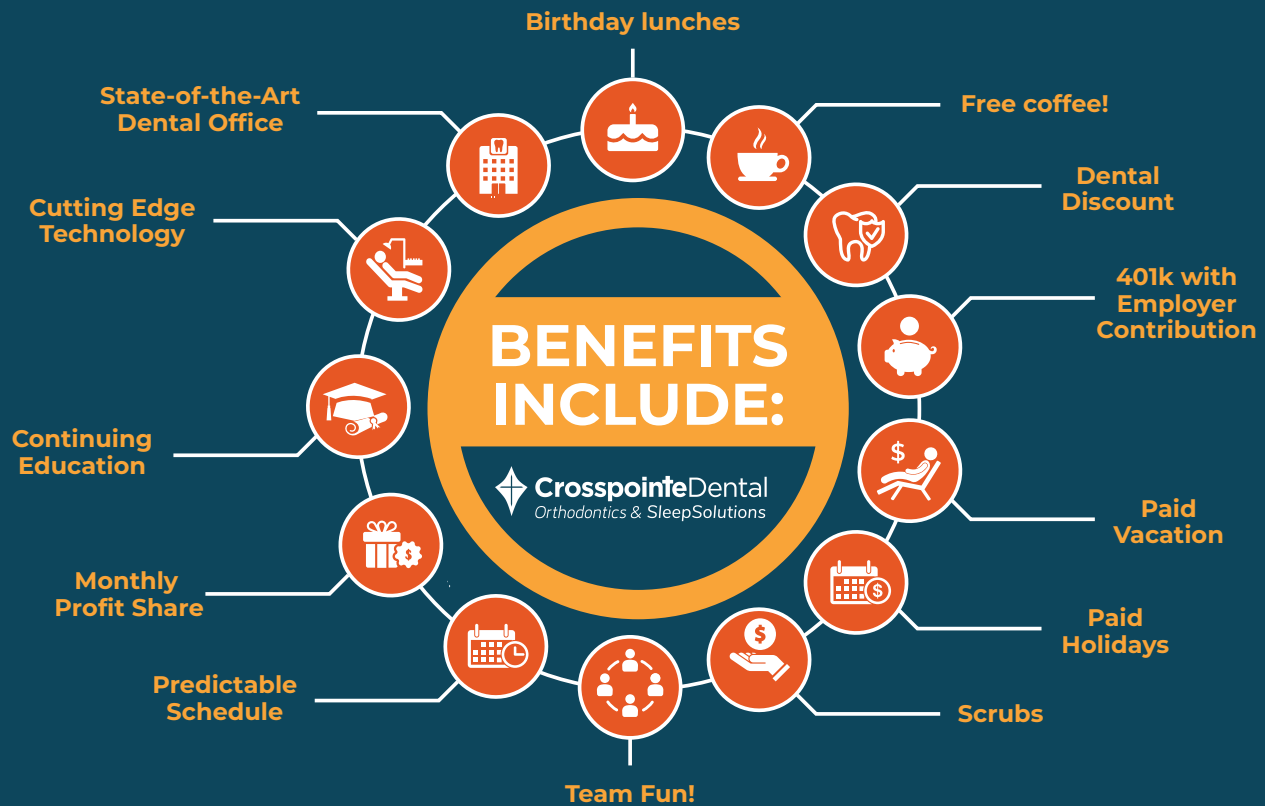


COMPENSATION SUMMARY

We believe it is imperative that each team member understand the many forms of compensation that the many forms of compensation offered. The pay summary includes the following items:

- Hourly rate
- Pay YTD
(your hourly rate + any overtime incurred this year)
- Paid Time Off
- Holiday Pay
- Monthly Profit Share
- 401K Employer Contribution
- Scrub Stipend

The Total Pay of all the above divided by your hours YTD= Actual Hourly



We believe it is important to be transparent with our team so that you have a full understanding of what a company is considering when examining payroll costs, determining pay scales, and the overall cost to employ each team member. We hope that you see the investment in YOU when you consider all the items listed, in addition to the other perks not listed on the sheet like birthday and department lunches, Continuing Education and fun team outings. If you have any questions, please feel free to let us know!